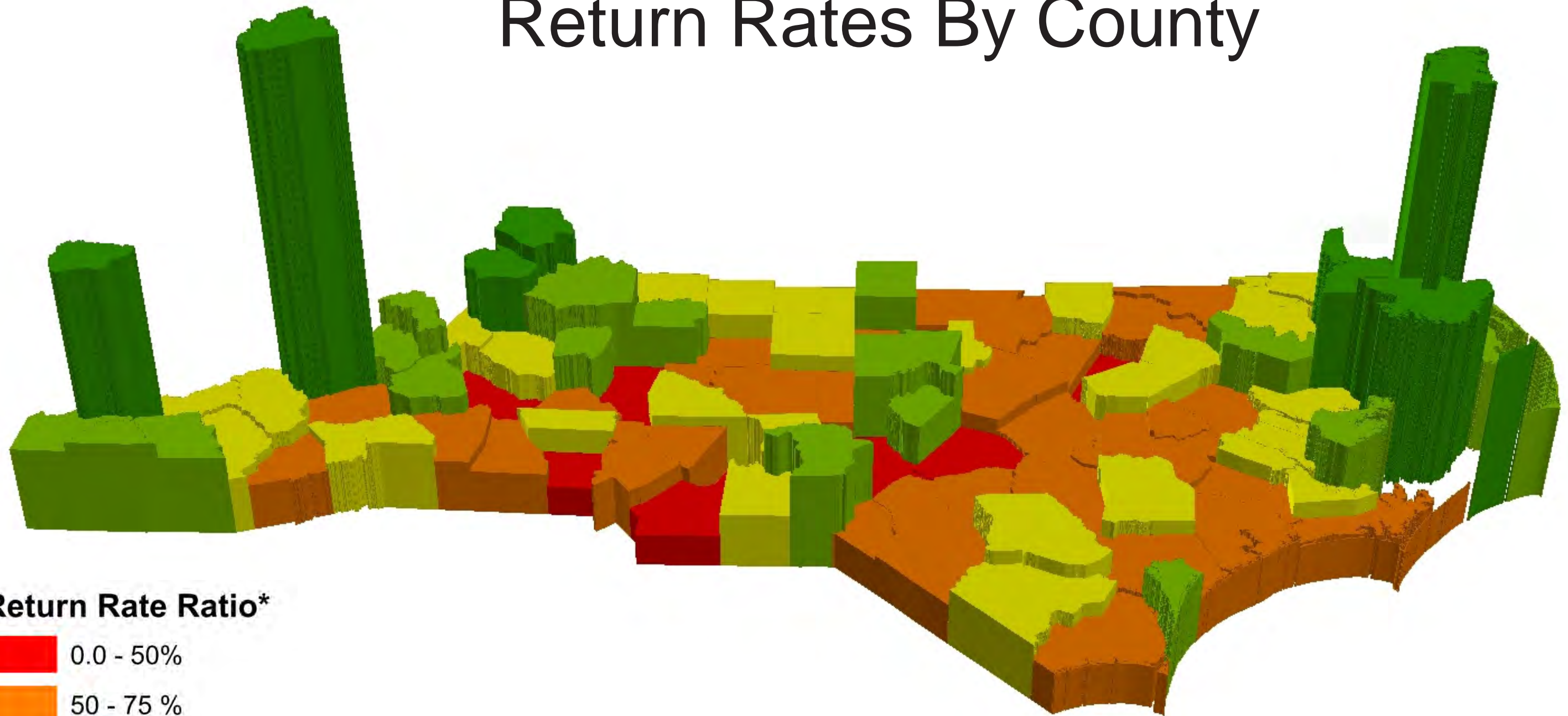


# North Carolina Transportation Tax Return Rates By County



## Return Rate Ratio\*



Created by  
NC Capital Area MPO  
Source Data Provided By NCDOT

\*NOTE: These figures are based on the sum of the NC Gas Tax, the US Gas Tax, and the NC Highway Use Tax (3% Net of Vehicles purchases only, does not include 3% of long-term leases or 8% of short-term leases). Gas tax figures are based on an estimation of the amount of gas consumed in a county calculated using NCDOT HPMS data.

This map was compiled using the best available data, however, CAMPO is not responsible for errors, omissions, and/or misuse

**FY 1991-2005 RETURN RATIO BY COUNTY SORTED ALPHABETICALLY**  
**TOTAL NCDOT SPENDING (AFTER TRANSFERS) VS. ESTIMATED TOTAL TAX REVENUE GENERATED\* (BEFORE TRANSFERS)**

County	Total Taxes Generated	Total Taxes Generated Annually	NCDOT Spending (FY 1991-2005)	NCDOT Spending Annually	Generated VS. Received	Generated VS. Received Annually	Return Ratio
ALAMANCE	\$548,517,103	\$39,179,793	\$365,119,060	\$26,079,933	(\$183,398,043)	(\$13,099,860)	66.56%
ALEXANDER	\$102,797,208	\$7,342,658	\$113,736,876	\$8,124,063	\$10,939,668	\$781,405	110.64%
ALLEGHANY	\$43,553,432	\$3,110,959	\$105,025,898	\$7,501,850	\$61,472,466	\$4,390,890	241.14%
ANSON	\$125,370,749	\$8,955,053	\$96,773,908	\$6,912,422	(\$28,596,841)	(\$2,042,631)	77.19%
ASHE	\$99,078,292	\$7,077,021	\$188,191,257	\$13,442,233	\$89,112,965	\$6,365,212	189.94%
AVERY	\$87,431,434	\$6,245,102	\$80,652,635	\$5,760,902	(\$6,778,799)	(\$484,200)	92.25%
BEAUFORT	\$192,637,906	\$13,759,850	\$145,003,555	\$10,357,397	(\$47,634,351)	(\$3,402,454)	75.27%
BERTIE	\$113,538,855	\$8,109,918	\$109,895,817	\$7,849,701	(\$3,643,038)	(\$260,217)	96.79%
BLADEN	\$172,105,387	\$12,293,242	\$171,607,912	\$12,257,708	(\$497,476)	(\$35,534)	99.71%
BRUNSWICK	\$413,433,368	\$29,530,955	\$247,673,031	\$17,690,931	(\$165,760,337)	(\$11,840,024)	59.91%
BUNCOMBE	\$909,691,649	\$64,977,975	\$553,692,231	\$39,549,445	(\$355,999,418)	(\$25,428,530)	60.87%
BURKE	\$390,693,725	\$27,906,695	\$189,142,851	\$13,510,204	(\$201,550,874)	(\$14,396,491)	48.41%
CABARRUS	\$581,250,170	\$41,517,869	\$381,501,116	\$27,250,080	(\$199,749,054)	(\$14,267,790)	65.63%
CALDWELL	\$279,136,148	\$19,938,296	\$240,490,301	\$17,177,879	(\$38,645,847)	(\$2,760,418)	86.16%
CAMDEN	\$46,298,032	\$3,307,002	\$35,409,568	\$2,529,255	(\$10,888,464)	(\$777,747)	76.48%
CARTERET	\$288,115,264	\$20,579,662	\$171,599,651	\$12,257,118	(\$116,515,613)	(\$8,322,544)	59.56%
CASWELL	\$90,911,249	\$6,493,661	\$106,903,158	\$7,635,940	\$15,991,909	\$1,142,279	117.59%
CATAWBA	\$663,596,689	\$47,399,763	\$389,269,908	\$27,804,993	(\$274,326,780)	(\$19,594,770)	58.66%
CHATHAM	\$249,877,503	\$17,848,393	\$344,411,563	\$24,600,826	\$94,534,060	\$6,752,433	137.83%
CHEROKEE	\$108,331,792	\$7,737,985	\$129,897,682	\$9,278,406	\$21,565,890	\$1,540,421	119.91%
CHOWAN	\$53,809,110	\$3,843,508	\$105,903,379	\$7,564,527	\$52,094,269	\$3,721,019	196.81%
CLAY	\$37,665,189	\$2,690,371	\$49,923,458	\$3,565,961	\$12,258,269	\$875,591	132.55%
CLEVELAND	\$400,245,160	\$28,588,940	\$243,933,111	\$17,423,794	(\$156,312,049)	(\$11,165,146)	60.95%
COLUMBUS	\$260,797,815	\$18,628,415	\$209,055,629	\$14,932,545	(\$51,742,186)	(\$3,695,870)	80.16%
CRAVEN	\$383,927,441	\$27,423,389	\$323,749,712	\$23,124,979	(\$60,177,729)	(\$4,298,409)	84.33%
CUMBERLAND	\$1,199,291,694	\$85,663,692	\$619,514,613	\$44,251,044	(\$579,777,081)	(\$41,412,649)	51.66%
CURRITUCK	\$127,326,913	\$9,094,780	\$136,601,154	\$9,757,225	\$9,274,240	\$662,446	107.28%
DARE	\$232,000,235	\$16,571,445	\$307,220,779	\$21,944,341	\$75,220,544	\$5,372,896	132.42%
DAVIDSON	\$646,604,586	\$46,186,042	\$374,578,392	\$26,755,599	(\$272,026,194)	(\$19,430,442)	57.93%
DAVIE	\$194,412,997	\$13,886,643	\$102,453,250	\$7,318,089	(\$91,959,747)	(\$6,568,553)	52.70%
DUPLIN	\$265,326,590	\$18,951,899	\$225,136,498	\$16,081,178	(\$40,190,092)	(\$2,870,721)	84.85%
DURHAM	\$932,806,981	\$66,629,070	\$764,967,832	\$54,640,559	(\$167,839,150)	(\$11,988,511)	82.01%
EDGECOMBE	\$233,387,845	\$16,670,560	\$208,284,784	\$14,877,485	(\$25,103,061)	(\$1,793,076)	89.24%
FORSYTH	\$1,270,567,462	\$90,754,819	\$653,111,924	\$46,650,852	(\$617,455,538)	(\$44,103,967)	51.40%
FRANKLIN	\$191,053,597	\$13,646,685	\$107,918,332	\$7,708,452	(\$83,135,265)	(\$5,938,233)	56.49%
GASTON	\$776,432,915	\$55,459,494	\$332,839,642	\$23,774,260	(\$443,593,273)	(\$31,685,234)	42.87%
GATES	\$51,945,879	\$3,710,420	\$47,442,988	\$3,388,785	(\$4,502,890)	(\$321,635)	91.33%
GRAHAM	\$29,133,851	\$2,080,989	\$95,986,730	\$6,856,195	\$66,852,879	\$4,775,206	329.47%
GRANVILLE	\$248,382,146	\$17,741,582	\$177,758,344	\$12,697,025	(\$70,623,802)	(\$5,044,557)	71.57%
GREENE	\$84,625,882	\$6,044,706	\$62,547,947	\$4,467,711	(\$22,077,935)	(\$1,576,995)	73.91%
GUILFORD	\$1,736,070,918	\$124,005,066	\$1,599,019,205	\$114,215,658	(\$137,051,713)	(\$9,789,408)	92.11%
HALIFAX	\$285,168,924	\$20,369,209	\$193,605,099	\$13,828,936	(\$91,563,824)	(\$6,540,273)	67.89%
HARNETT	\$362,639,440	\$25,902,817	\$174,148,691	\$12,439,192	(\$188,490,748)	(\$13,463,625)	48.02%
HAYWOOD	\$334,435,522	\$23,888,252	\$296,208,248	\$21,157,732	(\$38,227,274)	(\$2,730,520)	88.57%
HENDERSON	\$362,682,954	\$25,905,925	\$277,517,611	\$19,822,686	(\$85,165,343)	(\$6,083,239)	76.52%
HERTFORD	\$90,783,651	\$6,484,547	\$79,714,548	\$5,693,896	(\$11,069,103)	(\$790,650)	87.81%
HOKE	\$117,722,600	\$8,408,757	\$61,400,675	\$4,385,763	(\$56,321,925)	(\$4,022,995)	52.16%
HYDE	\$28,202,918	\$2,014,494	\$67,037,723	\$4,788,409	\$38,834,805	\$2,773,915	237.70%
IREDELL	\$708,389,434	\$50,599,245	\$328,302,047	\$23,450,146	(\$380,087,387)	(\$27,149,099)	46.34%
JACKSON	\$186,858,271	\$13,347,019	\$150,563,572	\$10,754,541	(\$36,294,698)	(\$2,592,478)	80.58%

County	Total Taxes Generated	Total Taxes Generated Annually	NCDOT Spending (FY 1991-2005)	NCDOT Spending Annually	Generated VS. Received	Generated VS. Received Annually	Return Ratio
JOHNSTON	\$705,325,100	\$50,380,364	\$382,406,482	\$27,314,749	(\$322,918,618)	(\$23,065,616)	54.22%
JONES	\$75,726,882	\$5,409,063	\$47,310,147	\$3,379,296	(\$28,416,735)	(\$2,029,767)	62.47%
LEE	\$233,419,332	\$16,672,809	\$241,344,522	\$17,238,894	\$7,925,190	\$566,085	103.40%
LENOIR	\$259,505,278	\$18,536,091	\$184,327,564	\$13,166,255	(\$75,177,714)	(\$5,369,837)	71.03%
LINCOLN	\$237,147,019	\$16,939,073	\$185,564,589	\$13,254,613	(\$51,582,430)	(\$3,684,459)	78.25%
MACON	\$140,686,653	\$10,049,047	\$158,433,837	\$11,316,703	\$17,747,184	\$1,267,656	112.61%
MADISON	\$79,647,658	\$5,689,118	\$437,443,625	\$31,245,973	\$357,795,967	\$25,556,855	549.22%
MARTIN	\$138,391,376	\$9,885,098	\$172,583,146	\$12,327,368	\$34,191,770	\$2,442,269	124.71%
MCDOWELL	\$235,827,029	\$16,844,788	\$236,883,306	\$16,920,236	\$1,056,277	\$75,448	100.45%
MECKLENBURG	\$2,793,547,688	\$199,539,121	\$1,976,130,971	\$141,152,212	(\$817,416,717)	(\$58,386,908)	70.74%
MITCHELL	\$59,042,178	\$4,217,298	\$82,597,207	\$5,899,801	\$23,555,029	\$1,682,502	139.90%
MONTGOMERY	\$142,668,438	\$10,190,603	\$119,352,951	\$8,525,211	(\$23,315,486)	(\$1,665,392)	83.66%
MOORE	\$332,985,718	\$23,784,694	\$153,177,176	\$10,941,227	(\$179,808,543)	(\$12,843,467)	46.00%
NASH	\$535,177,896	\$38,226,993	\$186,800,546	\$13,342,896	(\$348,377,350)	(\$24,884,096)	34.90%
NEW HANOVER	\$548,880,654	\$39,205,761	\$569,062,512	\$40,647,322	\$20,181,858	\$1,441,561	103.68%
NORTHAMPTON	\$134,180,168	\$9,584,298	\$99,988,786	\$7,142,056	(\$34,191,382)	(\$2,442,242)	74.52%
ONSLow	\$511,512,882	\$36,536,634	\$352,257,770	\$25,161,269	(\$159,255,112)	(\$11,375,365)	68.87%
ORANGE	\$510,922,940	\$36,494,496	\$296,210,556	\$21,157,897	(\$214,712,384)	(\$15,336,599)	57.98%
PAMLICO	\$54,853,554	\$3,918,111	\$75,220,663	\$5,372,904	\$20,367,109	\$1,454,793	137.13%
PASQUOTANK	\$115,137,031	\$8,224,074	\$135,536,588	\$9,681,185	\$20,399,557	\$1,457,111	117.72%
PENDER	\$243,210,764	\$17,372,197	\$157,590,763	\$11,256,483	(\$85,620,001)	(\$6,115,714)	64.80%
PERQUIMANS	\$56,279,952	\$4,019,997	\$69,110,718	\$4,936,480	\$12,830,766	\$916,483	122.80%
PERSON	\$128,061,348	\$9,147,239	\$94,963,470	\$6,783,105	(\$33,097,877)	(\$2,364,134)	74.15%
PITT	\$480,566,903	\$34,326,207	\$286,957,402	\$20,496,957	(\$193,609,501)	(\$13,829,250)	59.71%
POLK	\$110,361,843	\$7,882,989	\$109,693,392	\$7,835,242	(\$668,450)	(\$47,746)	99.39%
RANDOLPH	\$564,015,949	\$40,286,853	\$389,105,049	\$27,793,218	(\$174,910,900)	(\$12,493,636)	68.99%
RICHMOND	\$205,763,477	\$14,697,391	\$279,499,817	\$19,964,273	\$73,736,341	\$5,266,881	135.84%
ROBESON	\$631,211,689	\$45,086,549	\$360,310,811	\$25,736,487	(\$270,900,878)	(\$19,350,063)	57.08%
ROCKINGHAM	\$387,502,894	\$27,678,778	\$299,749,393	\$21,410,671	(\$87,753,501)	(\$6,268,107)	77.35%
ROWAN	\$539,788,423	\$38,556,316	\$433,788,548	\$30,984,896	(\$105,999,875)	(\$7,571,420)	80.36%
RUTHERFORD	\$249,558,501	\$17,825,607	\$186,604,257	\$13,328,875	(\$62,954,245)	(\$4,496,732)	74.77%
SAMPSON	\$301,400,707	\$21,528,622	\$181,726,984	\$12,980,499	(\$119,673,723)	(\$8,548,123)	60.29%
SCOTLAND	\$167,966,461	\$11,997,604	\$85,453,416	\$6,103,815	(\$82,513,045)	(\$5,893,789)	50.88%
STANLY	\$224,668,306	\$16,047,736	\$203,753,040	\$14,553,789	(\$20,915,266)	(\$1,493,948)	90.69%
STOKES	\$154,683,556	\$11,048,825	\$135,737,325	\$9,695,523	(\$18,946,230)	(\$1,353,302)	87.75%
SURRY	\$382,117,208	\$27,294,086	\$364,085,972	\$26,006,141	(\$18,031,236)	(\$1,287,945)	95.28%
SWAIN	\$76,501,989	\$5,464,428	\$66,099,332	\$4,721,381	(\$10,402,657)	(\$743,047)	86.40%
TRANSYLVANIA	\$123,654,518	\$8,832,466	\$81,830,623	\$5,845,044	(\$41,823,895)	(\$2,987,421)	66.18%
TYRRELL	\$21,188,180	\$1,513,441	\$106,756,008	\$7,625,429	\$85,567,828	\$6,111,988	503.85%
UNION	\$526,292,084	\$37,592,292	\$237,069,093	\$16,933,507	(\$289,222,991)	(\$20,658,785)	45.05%
VANCE	\$192,448,906	\$13,746,350	\$120,610,449	\$8,615,032	(\$71,838,457)	(\$5,131,318)	62.67%
WAKE	\$2,608,847,899	\$186,346,279	\$1,854,200,767	\$132,442,912	(\$754,647,132)	(\$53,903,367)	71.07%
WARREN	\$89,713,489	\$6,408,106	\$73,555,447	\$5,253,961	(\$16,158,042)	(\$1,154,146)	81.99%
WASHINGTON	\$65,875,649	\$4,705,403	\$142,462,652	\$10,175,904	\$76,587,003	\$5,470,500	216.26%
WATAUGA	\$171,327,918	\$12,237,708	\$287,699,160	\$20,549,940	\$116,371,243	\$8,312,232	167.92%
WAYNE	\$435,156,508	\$31,082,608	\$282,671,922	\$20,190,852	(\$152,484,587)	(\$10,891,756)	64.96%
WILKES	\$281,326,170	\$20,094,726	\$403,938,814	\$28,852,772	\$122,612,644	\$8,758,046	143.58%
WILSON	\$374,344,583	\$26,738,899	\$340,940,744	\$24,352,910	(\$33,403,839)	(\$2,385,988)	91.08%
YADKIN	\$198,246,389	\$14,160,456	\$214,405,843	\$15,314,703	\$16,159,455	\$1,154,247	108.15%
YANCEY	\$67,772,683	\$4,840,906	\$69,892,199	\$4,992,300	\$2,119,516	\$151,394	103.13%

\*NOTE: Figures are based on the sum of the NC and US Gas Taxes and the NC Highway Use Tax (3% Net of Vehicle purchases only, does not include percent from leases). Gas tax figures based on gas consumed in a county estimated using HPMS data.