



# US 1 CORRIDOR STUDY PHASE 2

## PRE-PROPOSAL CONFERENCE

July 11, 2011

Capital Area MPO  
Conference Room

## US 1 CORRIDOR STUDY - PHASE 2 PRE-PROPOSAL CONFERENCE

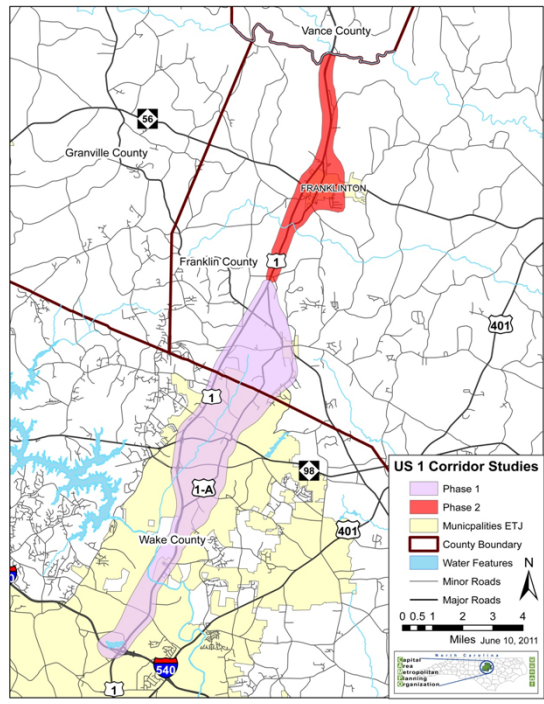
### Today's Topics

- ▶ Study Area
- ▶ Purpose of Study
- ▶ Study Considerations
- ▶ RFP Highlights
- ▶ Proposal Review Procedures
- ▶ Schedule
- ▶ Q&A



# US 1 CORRIDOR STUDY – PHASE 2

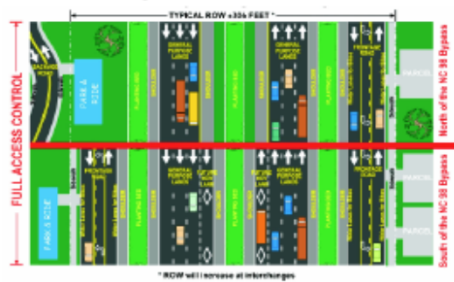
## Study Area



# ORIGINAL US 1 CORRIDOR STUDY

<http://www.campo-nc.us/us1corridorstudy.html>

**Figure ES-1:  
Typical Plan  
Locally Preferred Alternative**

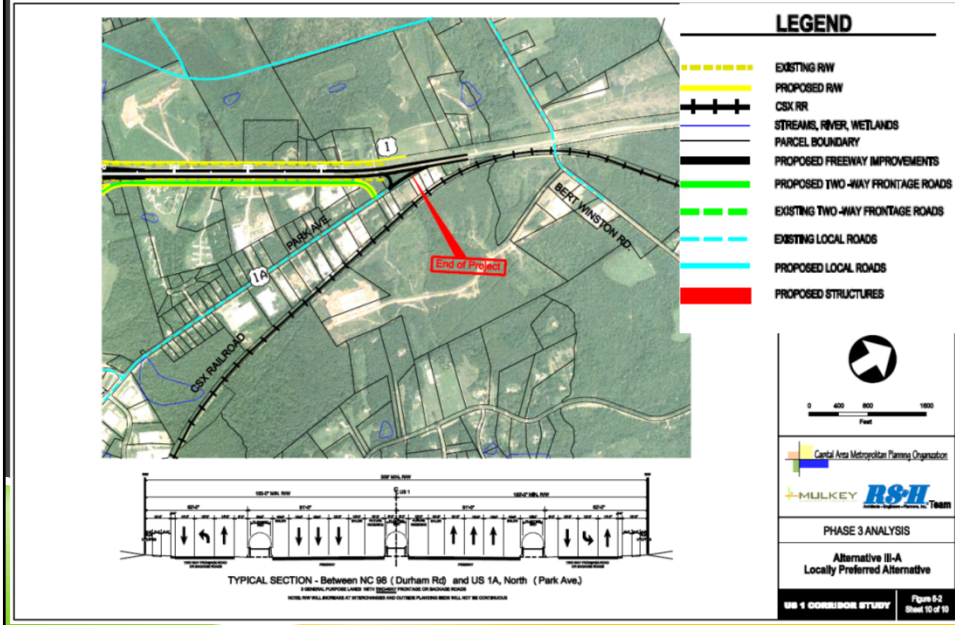


**Table ES-1:  
Right-of-Way and Construction Estimates**

Parcels Impacted	343
Total Takes	37
Total Acreage Taken	296 Acres
Right-of-Way Costs	\$103,716,000
Construction Costs	\$383,311,000
<b>Total Estimated Costs</b>	<b>\$487,027,000</b>



# ORIGINAL US 1 CORRIDOR STUDY



## US 1 CORRIDOR STUDY – PHASE 2

### Purpose of this Study

- ▶ Expand Original US 1 Corridor Study
- ▶ Mobility Issues / Traffic Growth
- ▶ Access Control
- ▶ Anticipated Developments Along US 1
- ▶ Growing Commuter Traffic
- ▶ Ultimate Freeway Build-out



## US I CORRIDOR STUDY – PHASE 2

### Study Considerations

- ▶ Land Use
  - ▶ Rural
  - ▶ Urban Fringe
- ▶ US I Corridor Study Phase I Recommendations
- ▶ Multi-modal
  - ▶ Transit
  - ▶ Bicycle
  - ▶ Pedestrian
  - ▶ Highway
  - ▶ ITS
  - ▶ Rail
- ▶ Access Management
  - ▶ Interim
  - ▶ Long-term



## US I CORRIDOR STUDY – PHASE 2

### RFP Highlights

- ▶ Core Technical Team: Based on US I Council of Planning
- ▶ Study Oversight Team
- ▶ Review of US I – Phase I and other relevant studies
- ▶ Existing Conditions Inventory
- ▶ Robust and Appropriate Public Engagement
- ▶ Performance Standards & Implementation
- ▶ Comprehensive Plan Report
- ▶ Local Presentations/Adoptions



## US 1 CORRIDOR STUDY – PHASE 2

### Desired End-Products (p. 43)

- ▶ Ultimate vision for the corridor
- ▶ Existing land use patterns, practices and regulations
- ▶ Projected deficiencies (2040)
- ▶ Transit Alternatives
- ▶ Access Management Plan for study area
- ▶ Appropriate ITS deployments
- ▶ Functional systems plans for roadway
- ▶ Projected multi-modal cross sections, including ROW
- ▶ Prioritized list of interim improvements
- ▶ Documented Public Engagement efforts
- ▶ Project sheets, including Problem Statements, for all modal recommendations



## US 1 CORRIDOR STUDY – PHASE 2

### Proposal Reviews

- ▶ Review Team
- ▶ Evaluation Criteria (p. 13)
  - ▶ Understanding of Scope of Work (30 Points)
  - ▶ Experience and qualifications of project team (20 points)
  - ▶ Public Engagement Strategy (20 points)
  - ▶ Relevant Prior Experience (15 points)
  - ▶ Interview for Selected Teams (15 points)



## US I CORRIDOR STUDY – PHASE 2

### Schedule

- ▶ Proposals Due: **July 22, 2011** at **4:00 p.m.** at CAMPO Office
- ▶ Proposal Opening: July 25, 2011 at 8:30 a.m. at CAMPO Office
- ▶ Interviews: Top 3 +/- Proposal Teams, August 12, 2011 at CAMPO Office (times TBD)
- ▶ Proposal Selection: ~August 17, 2011
- ▶ Project Period: ~Nov. 4, 2011 – June 30, 2012



## US I CORRIDOR STUDY – PHASE 2

### Questions & Answers



# US 1 CORRIDOR STUDY – PHASE 2

## Contact Information:

Shelby Powell  
NC Capital Area MPO  
127 W. Hargett Street, Suite 800  
Raleigh, NC 27601

919/996-4393

[Shelby.Powell@campo-nc.us](mailto:Shelby.Powell@campo-nc.us)

Website:

<http://www.campo-nc.us/rfprfq.html>

