




Seamless Transit in the Triangle

Mayors' Regional Bus Expansion Plan

John Tallmadge
Director of Commuter Resources
Triangle Transit Authority



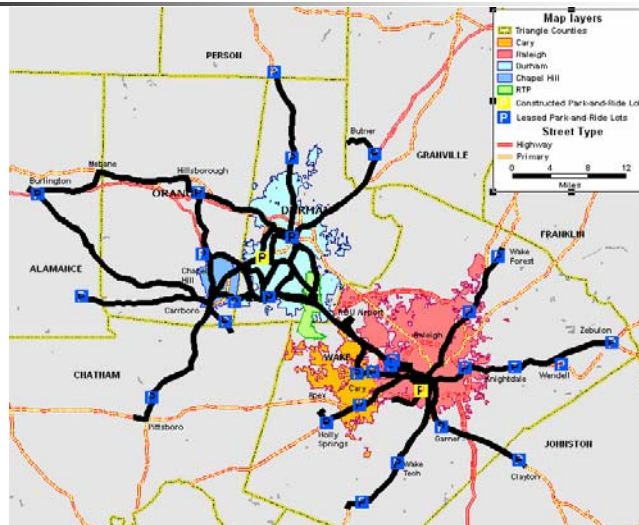
The Charge

- Charge came from Mayors Bell and Meeker in November 2006, due in April 2007
- Look at new **regional** corridors
- Look at improving existing **regional** services
- Look at unserved or under-served **local** corridors
- Develop scenarios for \$5 million, \$10 million, and \$15 million in new expenditures
- **This is not a TTA plan, this is a plan for all the transit providers working together to improve service.**

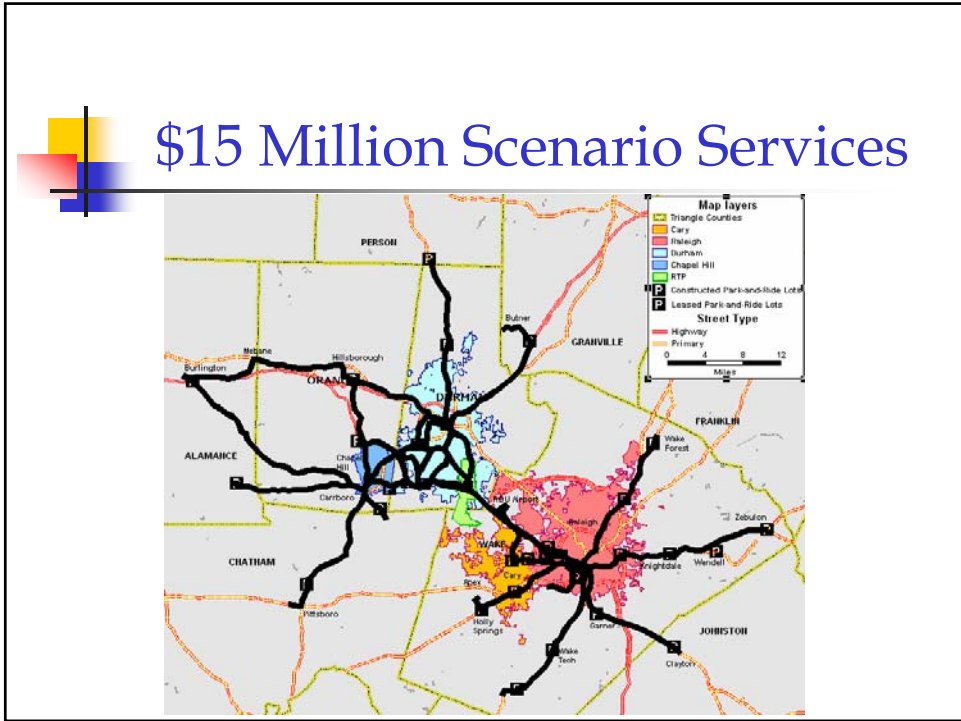
“Big Ideas” in this Plan

- Extend the reach of public transportation
 - New or improved regional express and local services
 - Sunday service
- Improve *quality*, not just quantity
 - 3 “*Rapid Ride*” corridors
 - Investments to shorten travel times
 - “Greener” fleet of buses
- Create a Regional Park-and-Ride Network
 - Mostly leased spaces in existing private parking lots
 - New facilities planned in US 15-501 Corridor between Chapel Hill and Durham, and at State Farmers’ Market

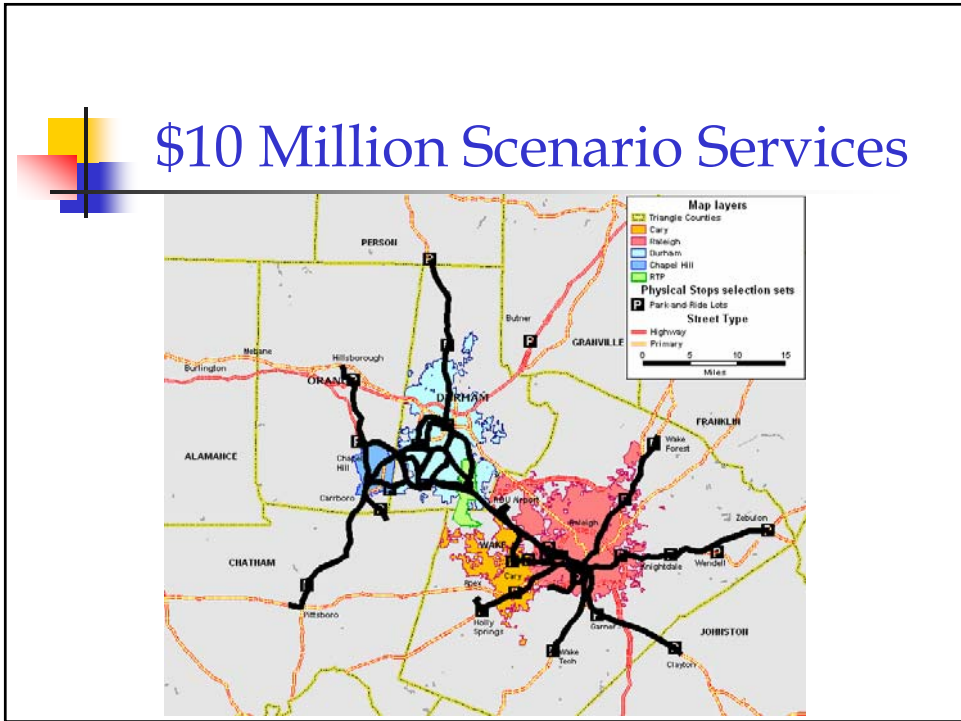
Park-and-Ride Network



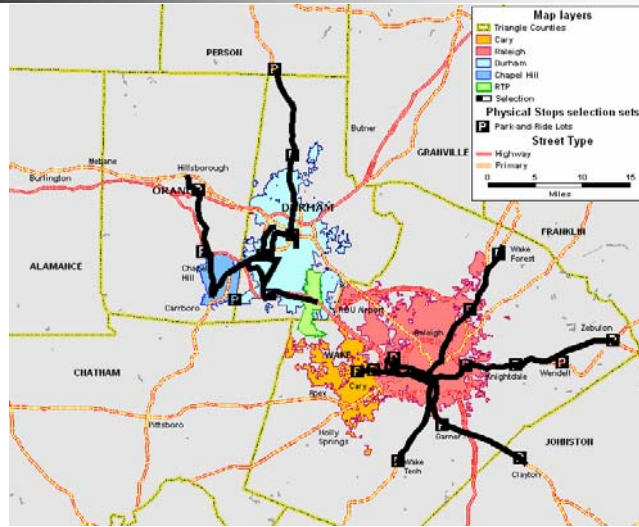
\$15 Million Scenario Services



\$10 Million Scenario Services



\$5 Million Scenario Services



Other Local Needs

- Raleigh Five Year Transit Plan
 - Currently only in Year 2 of a 5-year plan
- Durham Short-Range Transit Plan
 - Additional expansions identified
- Chapel Hill – UNC enhancements
- C-Tran potential expansion



Comparison of Scenarios

	\$15 Million	\$10 Million	\$5 Million
Add'l Counties/ Towns Served	5 / 11	3 / 7	2 / 5
Other Regional Improvements	Real-time info, Sunday, Express Frequency, RDU Direct	Real-time info, Sunday, Regional Express (1 route), RDU Direct (1 city)	Real-time info
Local <i>Rapid Ride</i> Corridors	3	3	1
Funding Gap	~\$64 M	~\$48.7 M	~\$24.3 M



New Funding Source Options

	\$15 Million	\$10 Million	\$5 Million
Funding Gap – 7-Year Total (Annual)	~\$64 M (\$8.9 M)	~\$48.7 M (\$6.7 M)	~\$24.3 M (\$3.4 M)
3-County Vehicle Registration Fee Increase	\$8	\$6	\$3
3-County Sales Tax Increase	6/100 of a cent	4/100 of a cent	2/100 of a cent
3-County Real- Estate Transfer Tax	7 cents per \$100 (\$140 on a \$200,000 transaction)	5 cents per \$100 (\$100 on a \$200,000 transaction)	3 cents per \$100 (\$60 on a \$200,000 transaction)
3-County Gas Tax Increase	0.6%	0.4%	0.2%

Source: Regional Transportation Alliance estimates, 2006