



take it. easy.

Member of the **g@triangle** family of services

Action Plan for Public Transportation in Wake County

David King
General Manager

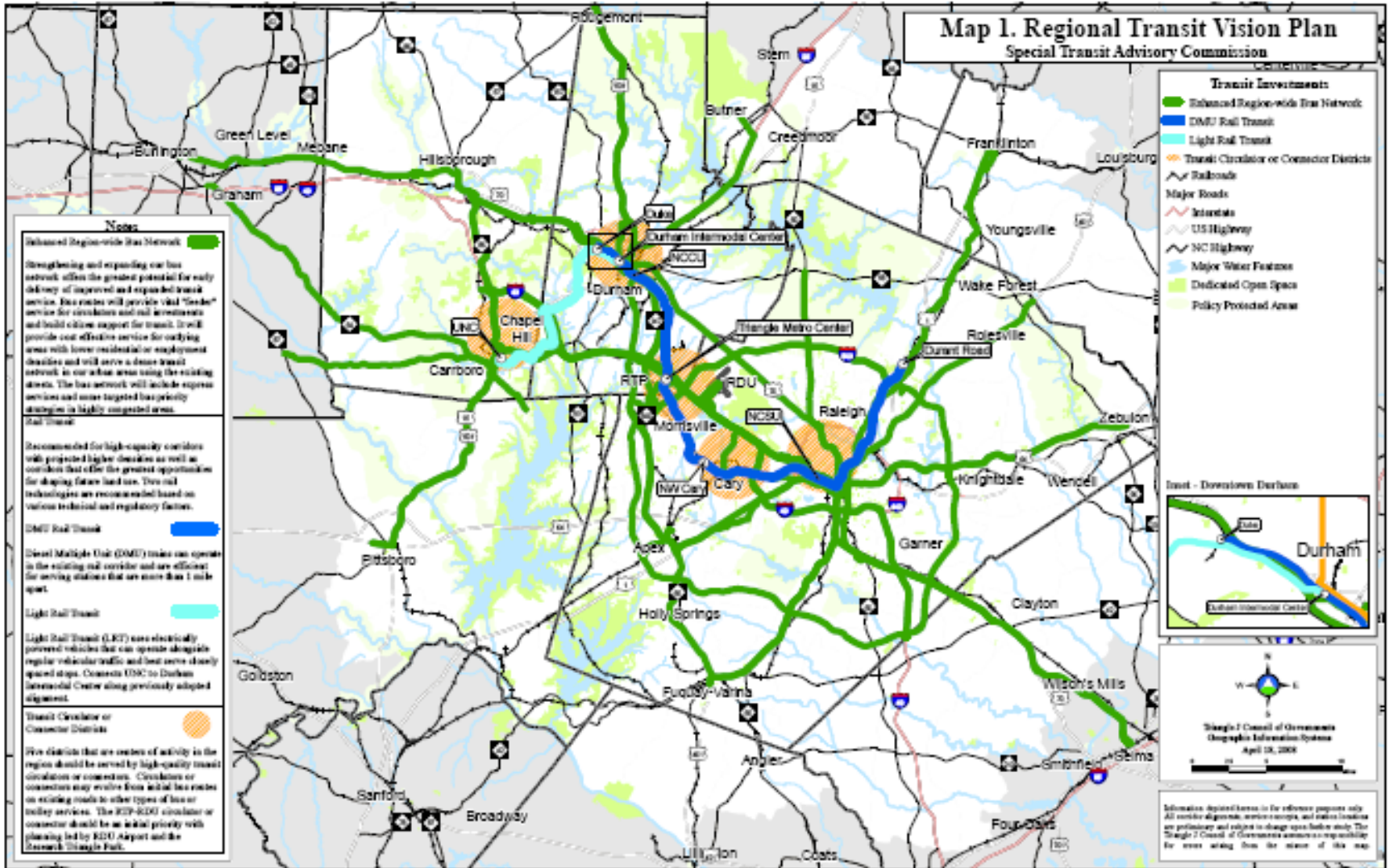
January 6, 2009

Special Transit Advisory Commission “STAC”

- ▶ STAC commissioned by *CAMPO* and *DCHC*
 - ▶ “Capital Area MPO” & “Durham, Chapel Hill, Carrboro MPO”
- ▶ Regional cross section of 29 stakeholders
- ▶ Final Report published in May 2008
 - ▶ Buses, Circulators, 56 miles of Rail (\$2.27 Billion, 2007 \$)
 - ▶ Assumed DMU vehicle technology except Chapel Hill to Durham LRT
 - ▶ Assumed no federal funds for first project
 - ▶ ½ cent sales tax

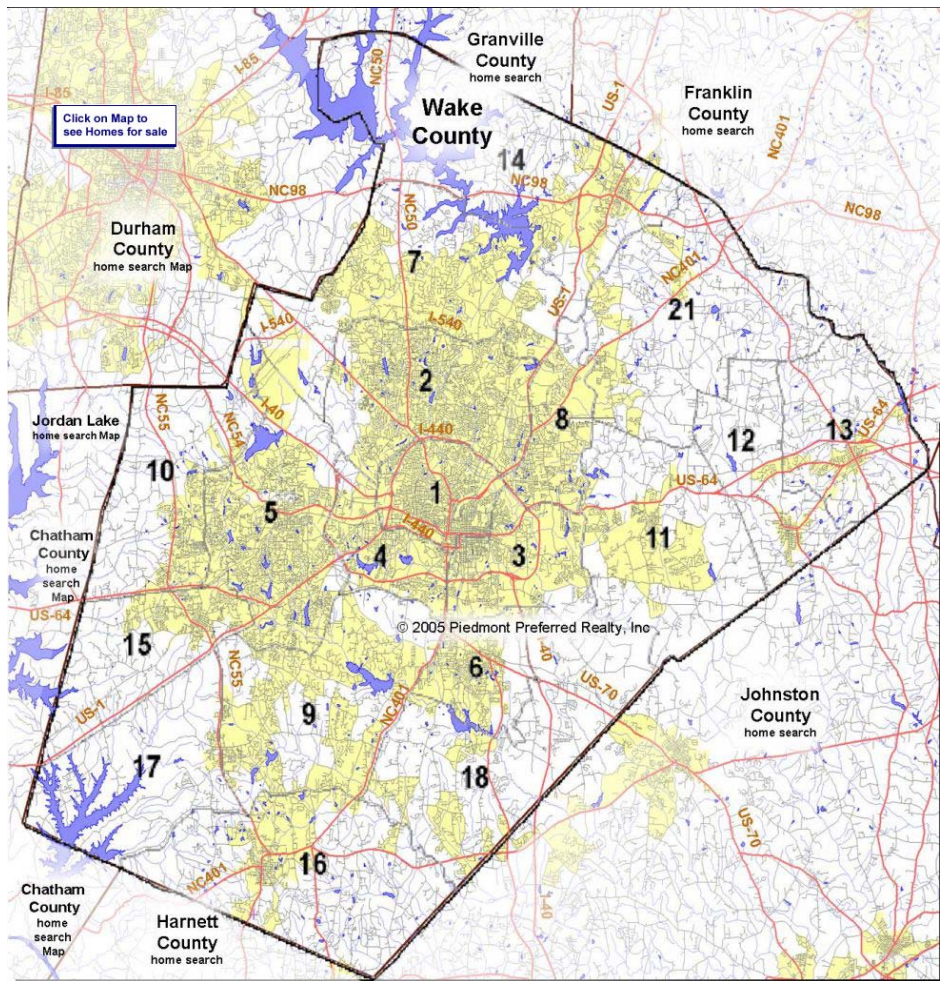
Map 1. Regional Transit Vision Plan

Special Transit Advisory Commission





What is Wake County Planning?

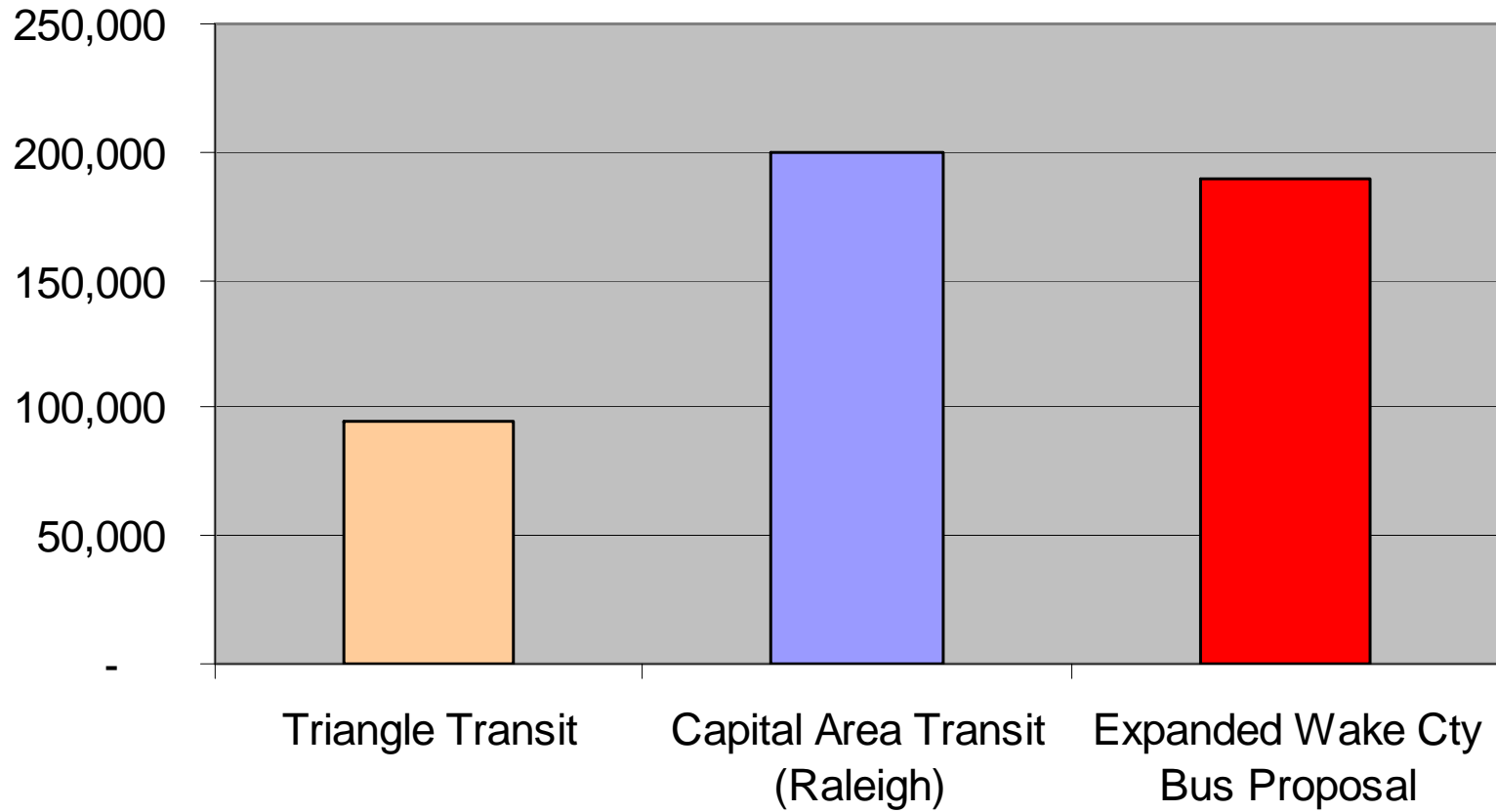


Bus Service Expansion:

- ▶ Over 100 new buses total
- ▶ 75 new buses by end of 2013 primarily for express bus service between municipalities



Annual Hours of Service



Core Bus Recommendations for the Town of Apex

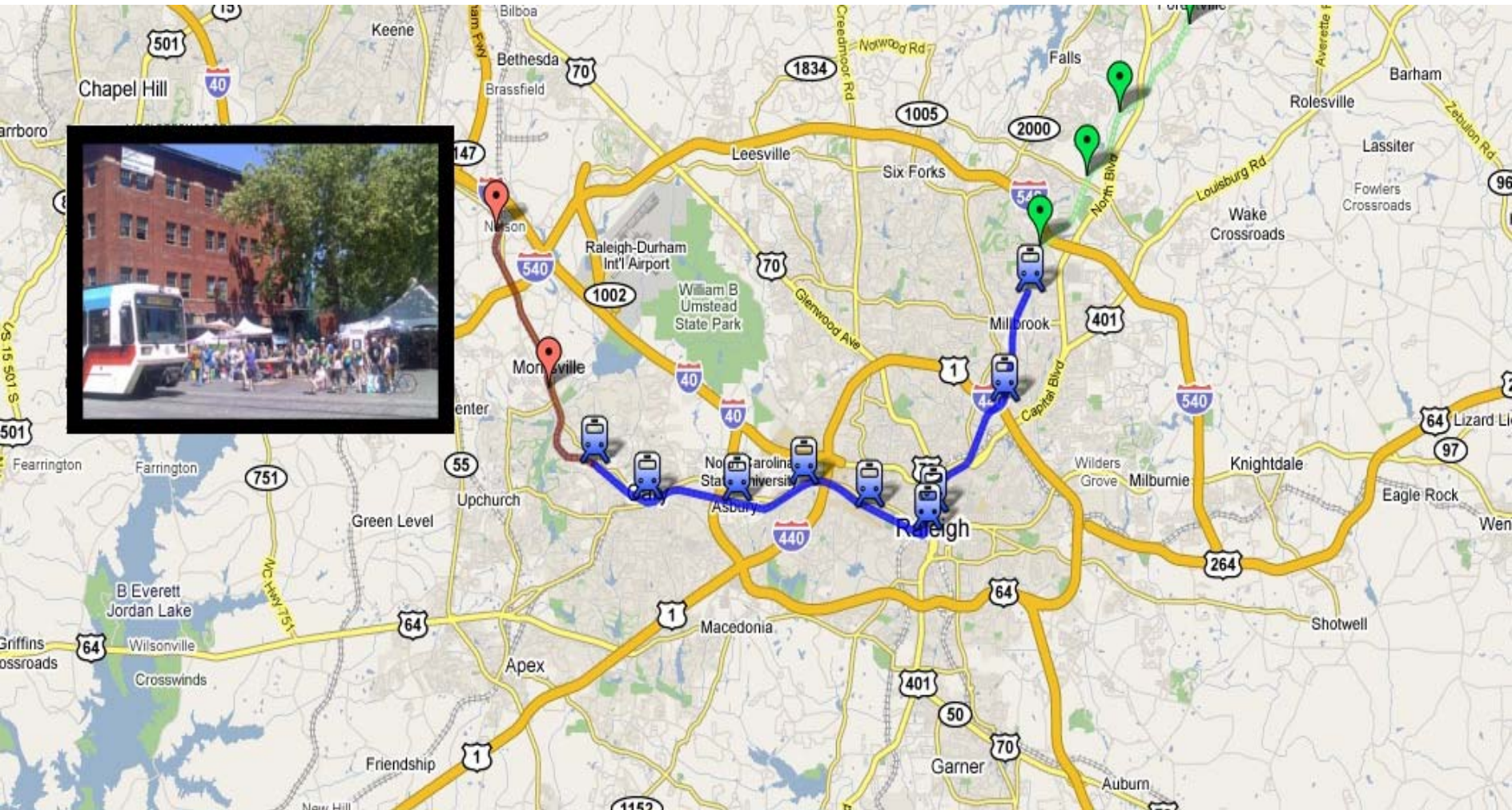
- ▶ Continuing service to RTP via Route 311
- ▶ Commuter Service from Holly Springs to Raleigh
- ▶ Regional Express Service from Apex/ Cary to NCSU/ Raleigh
- ▶ See handout for additional bus routes
- ▶ All routes receive Real-Time Passenger Information and other bus amenities



Rail Transit Construction:



- ▶ **Transit Technology:** Light Rail Transit (LRT) trains powered by electricity
- ▶ **Project Description:** NW Cary Station to Spring Forest Station
- ▶ **Project Length:** 17 miles
- ▶ **Opening Date:** December, 2019



Funding

- ▶ .5 cent sales tax
- ▶ \$10 increase in vehicle registration fee
- ▶ No Federal capital support for project is assumed.
- ▶ Federal support and/or additional State and local support could accelerate project completion for some segments of the initial 17 miles.
- ▶ Federal support and/or additional State and local support could also accelerate rail extensions north of Spring Forest and west of Cary.



Questions ?